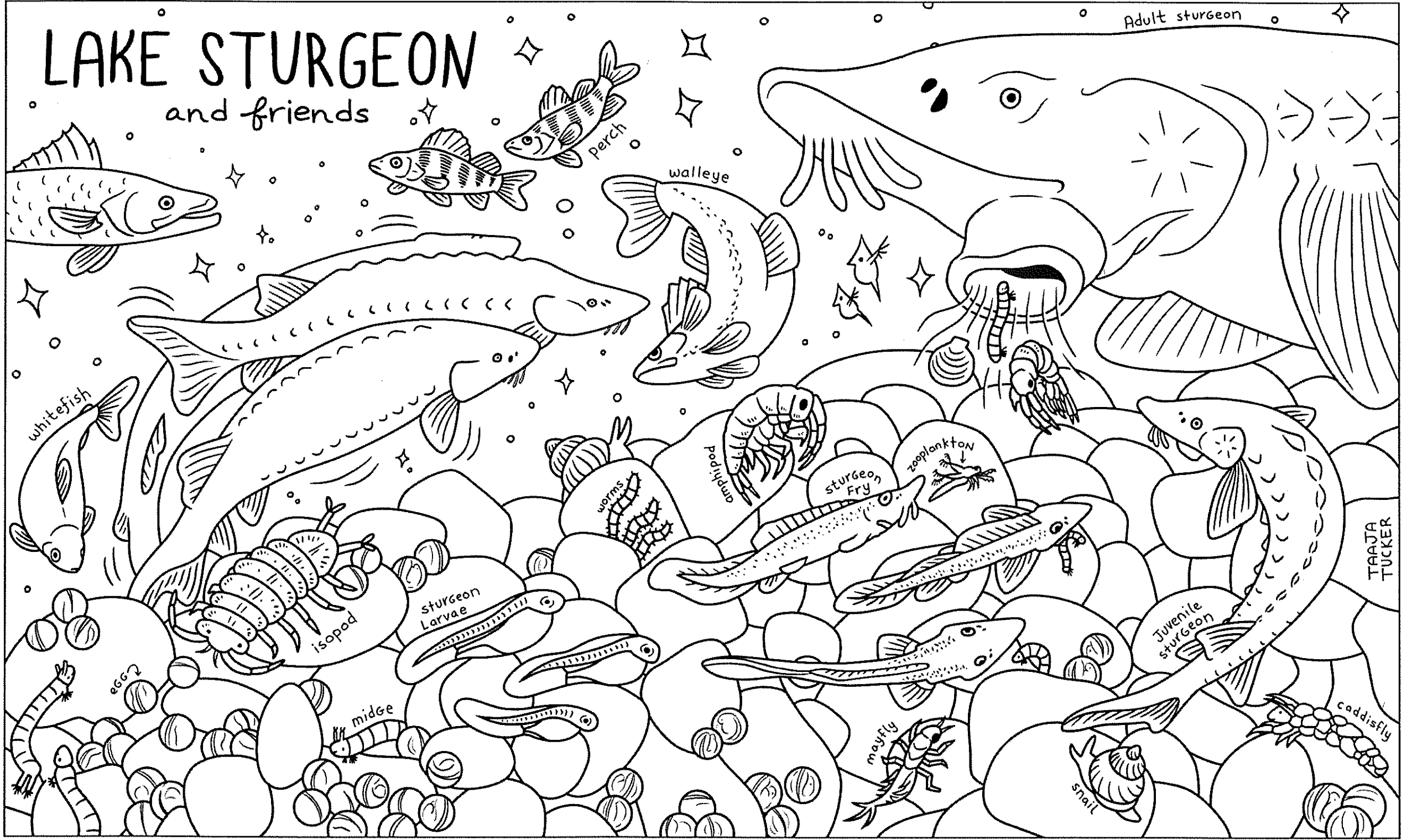


LAKE STURGEON

and friends

Adult sturgeon



TAAJA
TUCKER

Sturgeon Word Search!



Y S W H N S R P R W S N G O S S
 D W U A S A C E T T G I R M Z D
 T O R O I I S U H J S F E N B O
 I E R V M N F R T T Y L A I C P
 S N A S E O E X U E I A T V I I
 S C D P A A R R X S S C L O H H
 O L I I T L G D S C N R A R T P
 G C E E G E F O A H V E K E N M
 A F N B O E F I W N V C E G E A
 A E O N R G N I N T A O S I B L
 D E W Q N A E O D L A R V A E E
 H R C I H H B E U Y M E R N P C
 V M V R I A L C T S P T Y T E H
 E I R W Q C S N E C S E V L U F
 L C A R T I L A G E G H S G G E
 C H I R O N O M I D S H E Y I L

Hint: Words can be backwards or upside down!

ACIPENSER – The Genus, or the first part of the sturgeon's scientific name *Acipenser fulvescens*.

AMPHIPODS – A small, shrimp-like invertebrate that sturgeon like to eat.

ANADROMOUS – Migrating up river to spawn.

BARBELS – The sensory organs on a sturgeon's nose.

BENTHIC – To live on the bottom of the river or lake.

CARTILAGE – What most of a sturgeon's skeleton is made of, like a shark.

CAVIAR – Sturgeon eggs that people like to eat.

CHIRONOMIDS – Also known as midges, these worm-like creatures are sturgeon food.

DORSAL FIN – The fin on top of the sturgeon.

EGGS – A female sturgeon can lay up to 700,000 eggs in a season! Eggs hatch in 5-8 days.

FISH – A sturgeon is classified as a bony fish because its ancestors likely had bones.

FULVESCENS – The second part of the sturgeon's scientific name, the Species.

GIANT – Lake sturgeon can be up to 6 feet long and weigh 200 pounds!

GREAT LAKES – Home to lake sturgeon.

HETEROCERCAL FIN – Like a shark's tail, the backbone extends to the tip of the caudal fin.

INDIGENOUS – Sturgeon are indigenous, or native, to the Great Lakes region.

LARVAE – Baby sturgeon that have just emerged from the egg that still have a yolk sac.

LIVING FOSSIL – Sturgeon retain many features of ancient fish.

NARES – The nostrils or "nose."

OMNIVORE – Sturgeon eat both plants and animals.

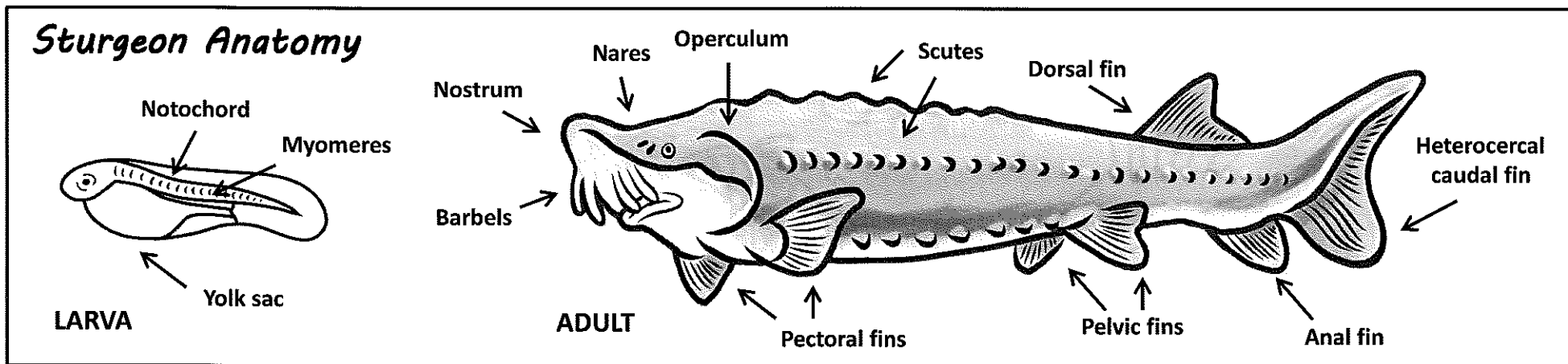
REEF – Sturgeon require a rocky reef to lay their eggs.

SCUTES – The hardened, plate-like structures on the sides of sturgeon.

ST. CLAIR – Sturgeon live in the St. Clair River and Lake St. Clair between the USA and Canada.

STURGEON – A large fish native to the Great Lakes.

THREATENED – Sturgeon are state-threatened, meaning that they could be soon considered endangered across some or all of their range without intervention.



Y S W H N S R P R W S N G O S S
 D W U A S A C E T T G I R M Z D
 T O R O I I S U H J S F E N B O
 I E R V M N F R T T Y L A I C P
 S N A S E O E X U E I A T V I I
 S C D P A A R R X S S C L O H H
 O L I I T L G D S C N R A R T P
 G C E E G E F O A H V E K E N M
 A F N B O E F I W N V C E G E A
 A E O N R G N I N T A O S I B L
 D E W Q N A E O D L A R V A E E
 H R C I H H B E U Y M E R N P C
 V M V R I A L C T S P T Y T E H
 E I R W Q C S N E C S E V L U F
 L C A R T I L A G E G H S G G E
 C H I R O N O M I D S H E Y I L